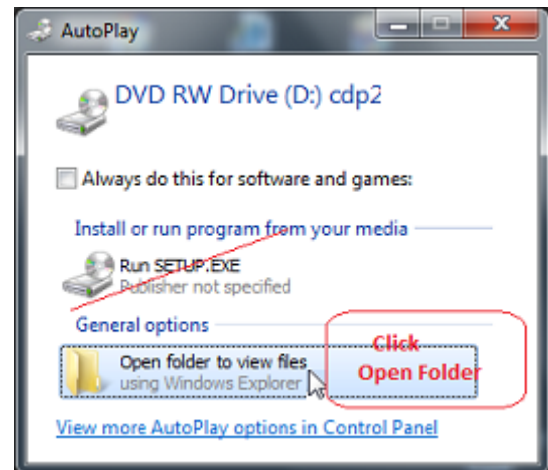
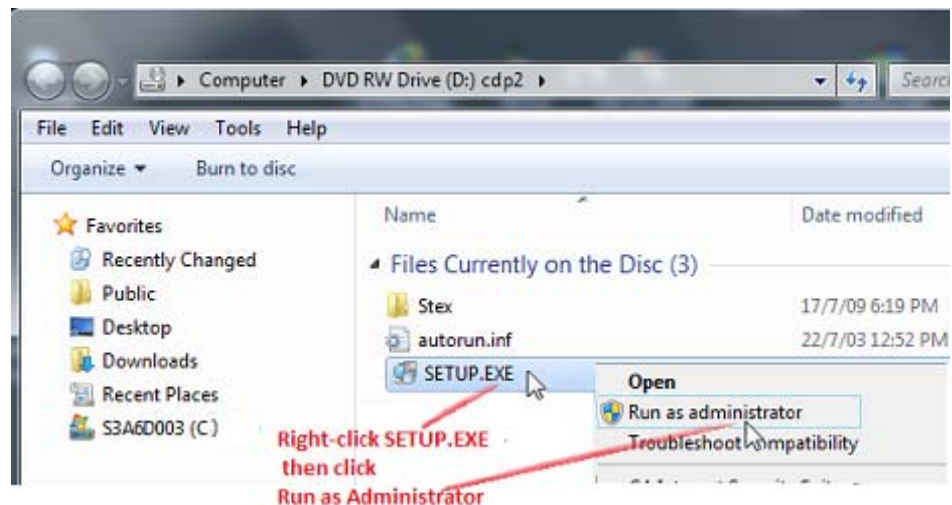


Installing STEX Portfolio Manager 9 and/or STEX Charting 9 on WINDOWS Vista, WINDOWS 7, 8 or 10

1. Insert CD in drive and this window should appear.
Select 'Open folder to view files'



2. Right-click SETUP.EXE in
the folder window then
click *Run as Administrator*



3. You may get an 'Unknown publisher' for Setup message – click **Yes** to allow

4. The setup program will then proceed